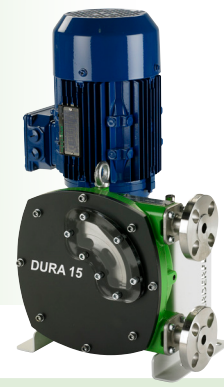
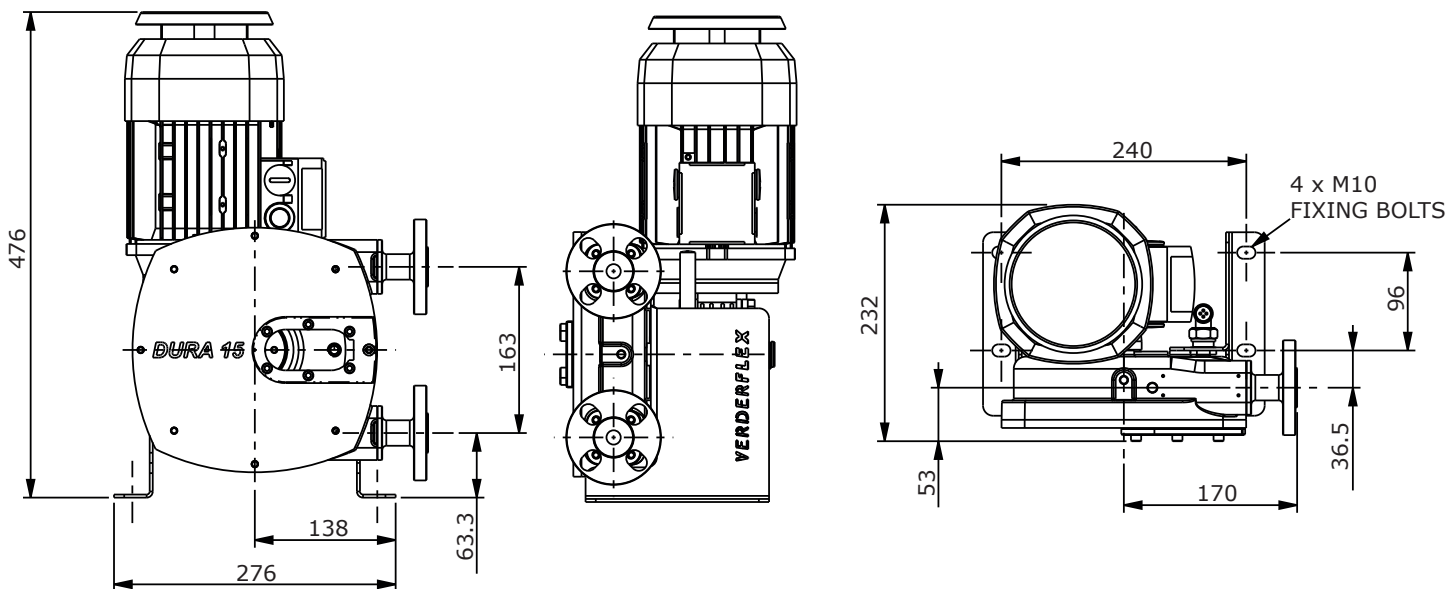


Verderflex Dura 15



VERDERFLEX®

Description	Material	Paint Detail
Pump Housing	Cast Iron (GG25)	RAL 6018 (Green)
Front Cover	Powder Coated Carbon Steel with Polycarbonate Inspection Window	RAL 7021 (Black)
Rotor	Cast Iron (GG25) Option: Aluminium (LM25)	
Drive Shaft	EN24T Steel	
Flange	316 Stainless Steel Universal slotted design complies with DIN PN16, ANSI 150# & JIS10K Options: Polypropylene, PVDF & 316 Stainless Steel Hose Tail	
Base Frame	Powder Coated Carbon Steel	RAL 7035 (Grey)
Torque Arm	Carbon Steel	RAL 7021 (Black)
Bearing	Bearing Steel	
Shaft Seal	Viton Option: PTFE	
Lubricant	Verderlube - Glycerine based lubricant Verdersil - Silicone based lubricant	
Hose	Natural Rubber (NR) Options: Nitrile Buna Rubber (NBR) Ethylene Propylene Diene Monomer (EPDM), Food Grade Nitrile Buna (NBRF), Hypalon® (CSM) and Verderprene	
Weight	Complete pump excluding drive: 30 kg	

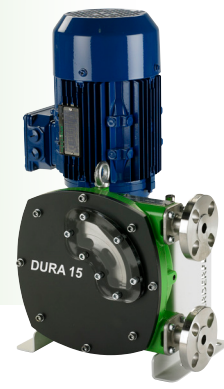


All dimensions are in mm.

All dimensions and weights are for guidance only.



Verderflex Dura 15

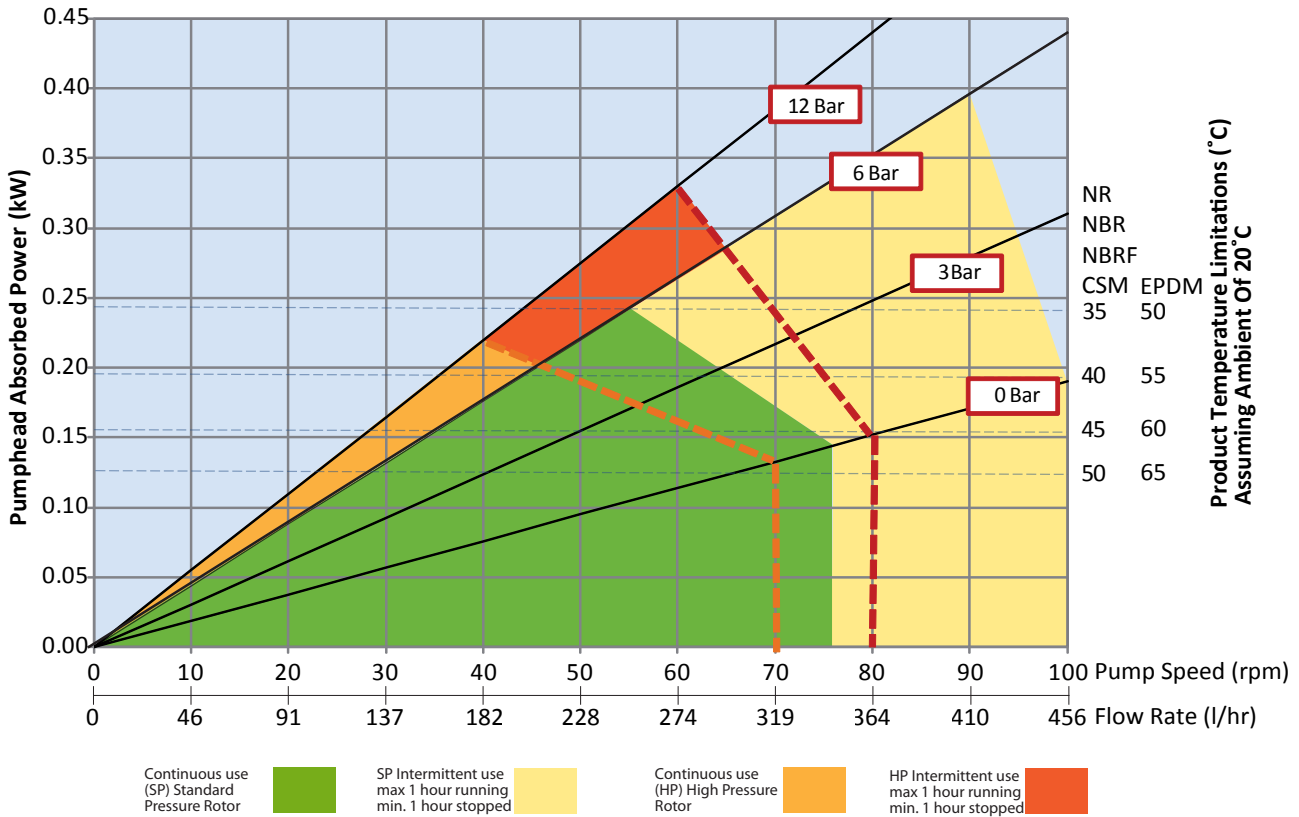


Standard Pump Configurations

Flow (l/hr)	Pump Speed RPM	Installed Motor Power kW	Max Turndown at 6 Bar discharge pressure
50	11	0.18	2:1
82	18	0.25	2:1
127	28	0.37	5:1
159	35	0.37	2:1
214	47	0.55	3:1
255	56	0.55	5:1
319	70	0.75	10:1

Any application below 15 Hz may require special review

Flows are typical and were measured with water at 20°C with no suction lift or discharge pressure. Actual flows will vary according to suction conditions, discharge pressure and normal component production tolerances.
DURA PUMPS OPERATING ABOVE 8 BAR REQUIRE CONSULTATION WITH MANUFACTURER OR DISTRIBUTOR



Find your local supplier
at www.verderflex.com

For construction installation and floor mounting drawings
please contact your local authorised Verderflex® distributor.

VERDER
passion for pumps